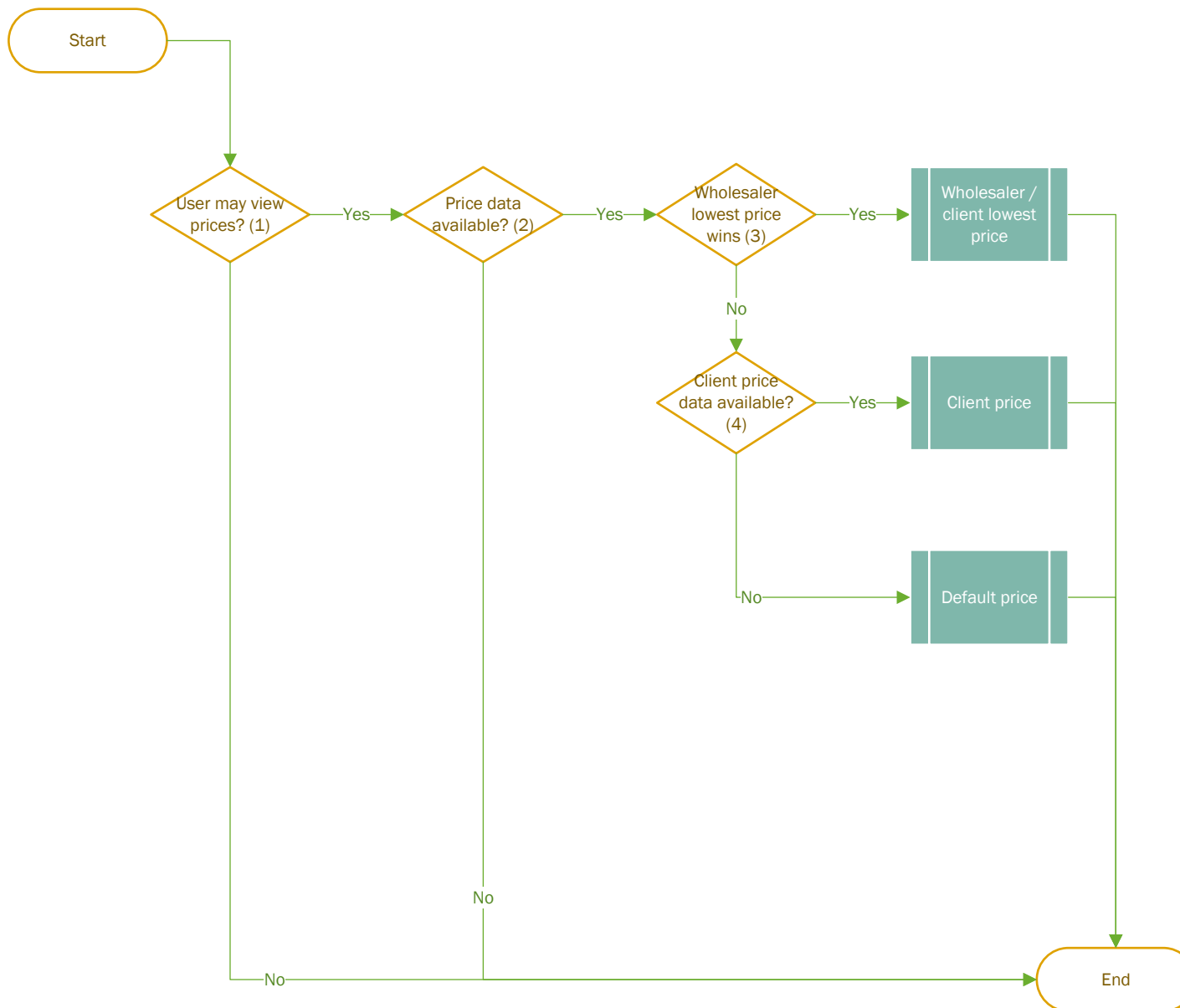


Pricing process



Additional information

(1) Defined on two levels

- Users

Data can be added by use of the API. See POST/PUT of Users

Field: MayViewPrices

- Wholesaler

Field updated by use of the backend. This overrules the User defined field.

(2) Pricing data

Data can be added by use of the API. See POST/PUT of Products/LinkProducts

- Wholesaler price: SalesPriceList

- Wholesaler promo price: SalesPriceListPromo

Data can be added by use of the API. See POST/PUT of ClientProducts

- Client price: SalesPriceList

- Client promo price: SalesPriceListPromo

(3) Field updated by use of the Backend

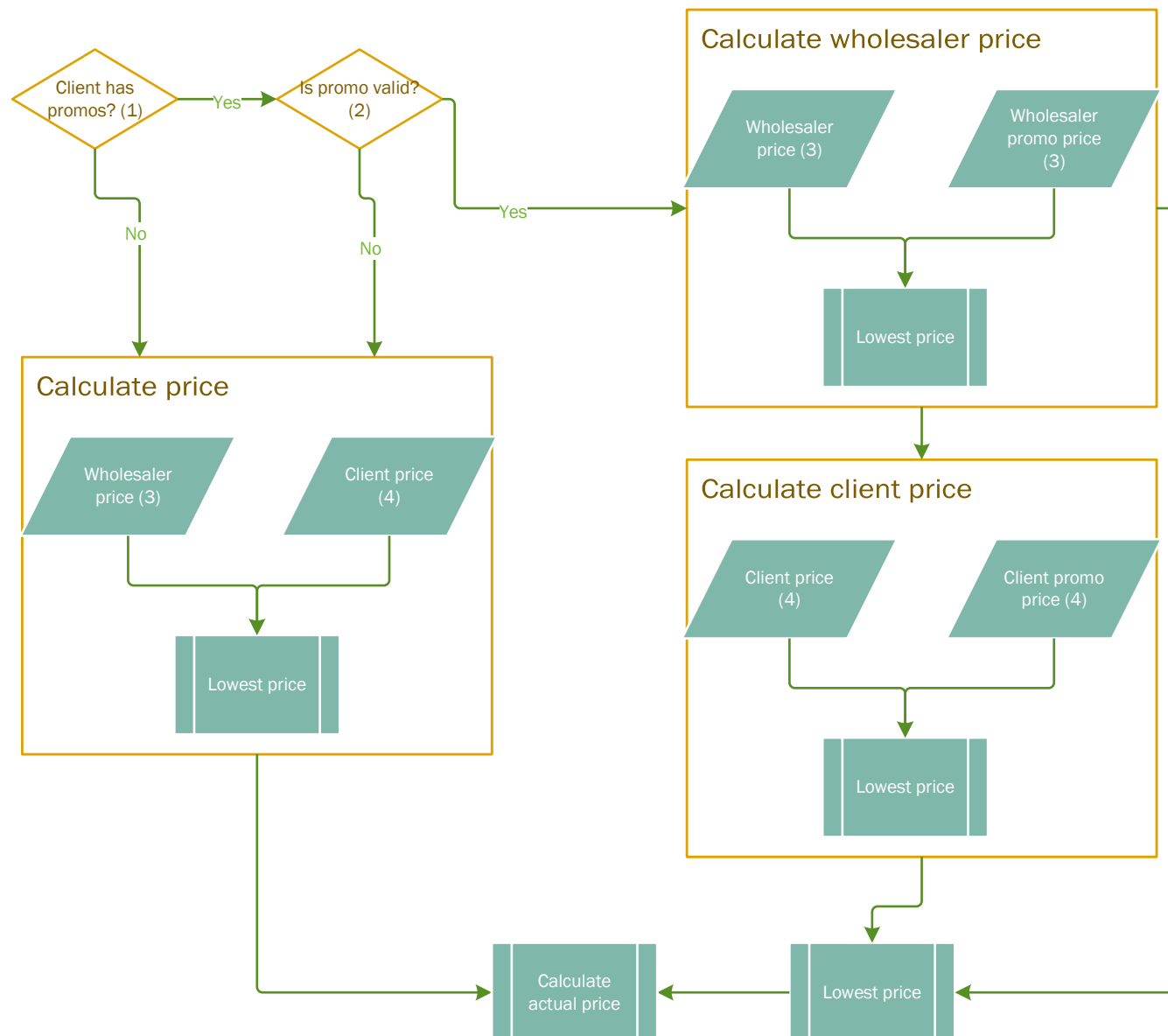
(4) Pricing data

Data can be added by use of the API. See POST/PUT of ClientProducts

- Client price: SalesPriceList

- Client promo price: SalesPriceListPromo

Wholesaler / client subprocess



Additional information

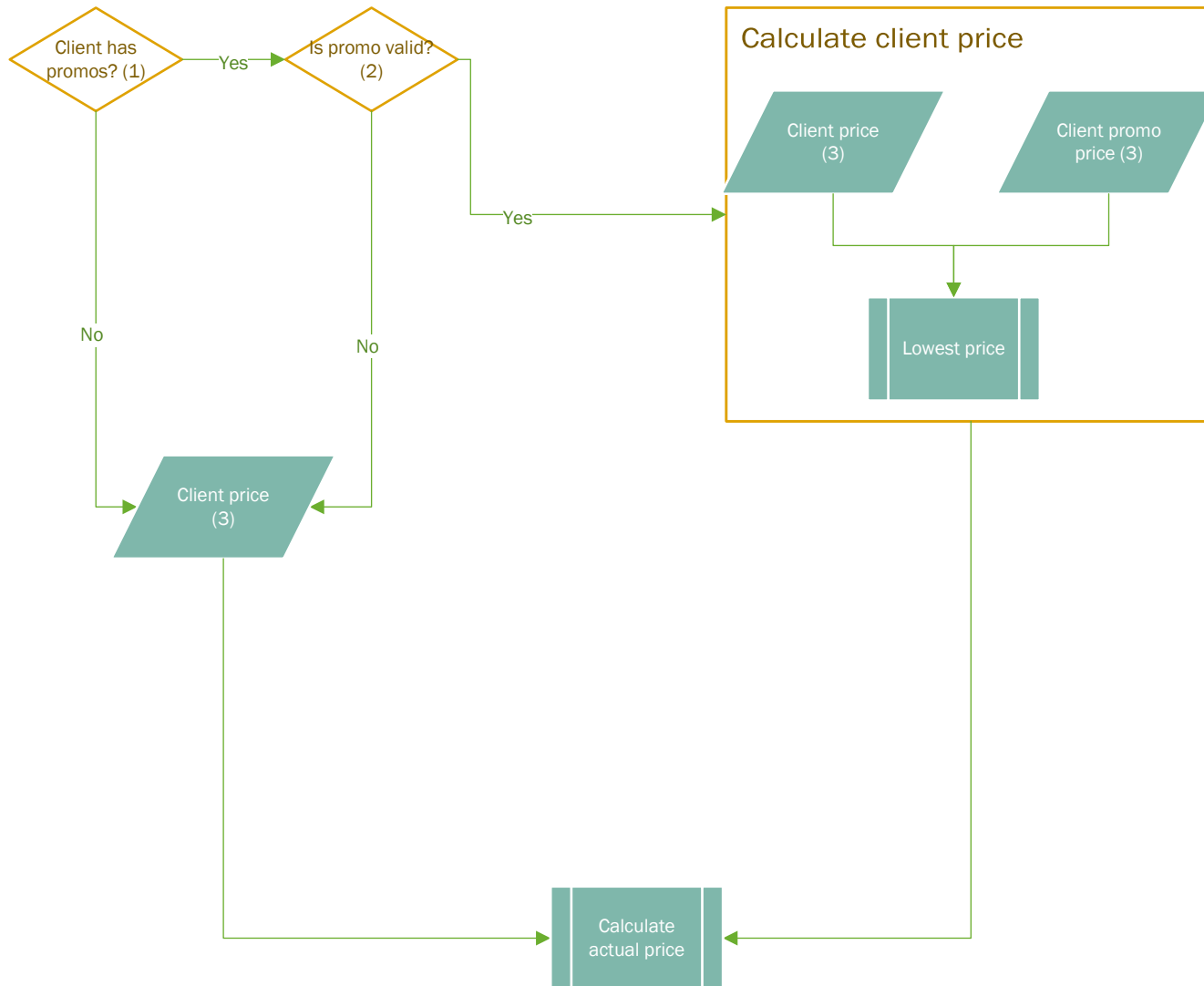
(1) Has rights to view/get promotions
Data can be added by use of the API. See POST/PUT of Clients
Field: HasPromos

(2) Promotion data
Data can be added by use of the API. See POST/PUT of Products/LinkProducts
- PromoValidFrom
- PromoValidUntil

(3) Pricing data
Data can be added by use of the API. See POST/PUT of Products/LinkProducts
- Wholesaler price: SalesPriceList
- Wholesaler promo price: SalesPriceListPromo

(4) Pricing data
Data can be added by use of the API. See POST/PUT of ClientProducts
- Client price: SalesPriceList
- Client promo price: SalesPriceListPromo

Client price subprocess



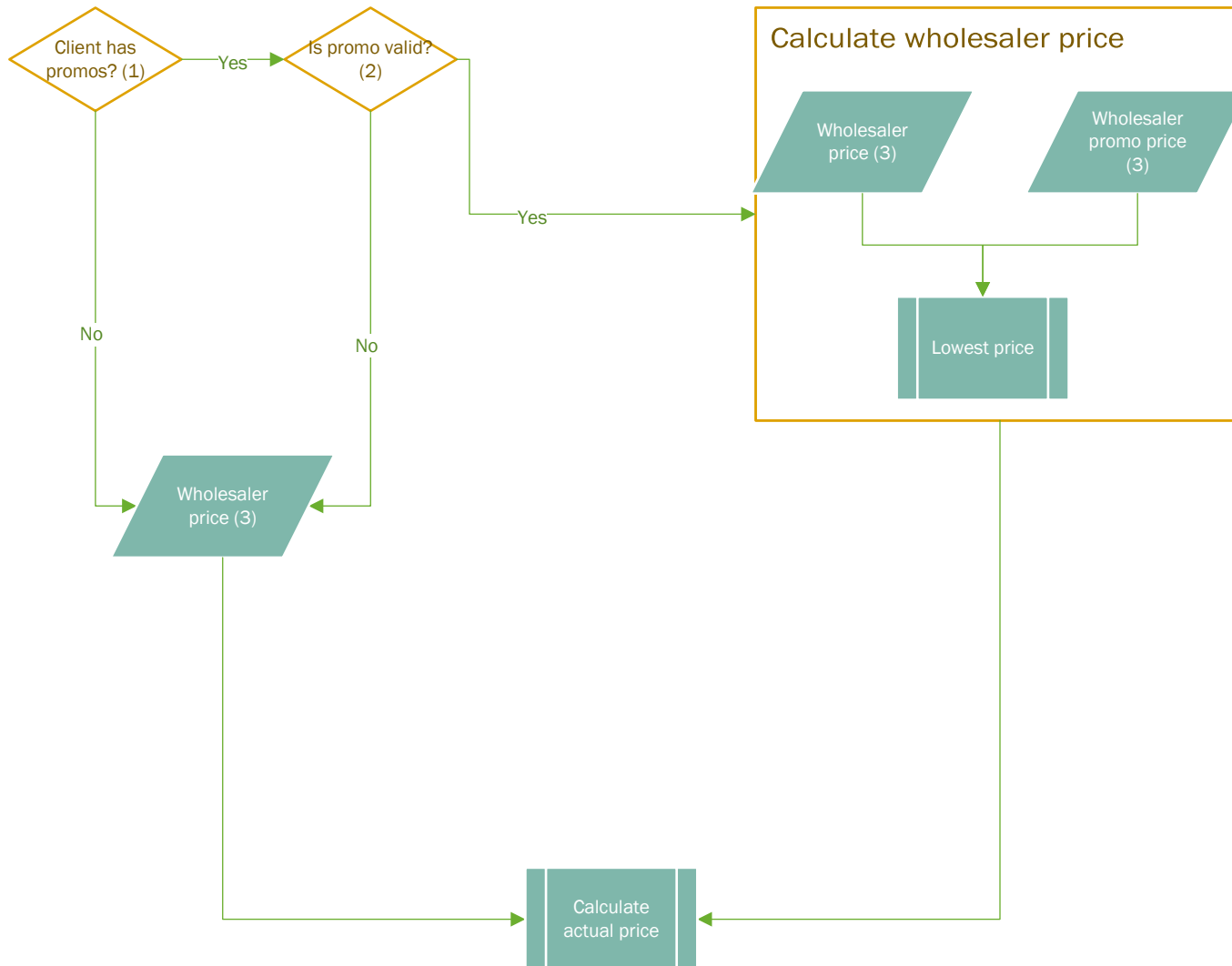
Additional information

(1) Has rights to view/get promotions
Data can be added by use of the API. See POST/PUT of Clients
Field: HasPromos

(2) Promotion data
Data can be added by use of the API. See POST/PUT of Products/LinkProducts
- PromoValidFrom
- PromoValidUntil

(3) Pricing data
Data can be added by use of the API. See POST/PUT of ClientProducts
- Client price: SalesPriceList
- Client promo price: SalesPriceListPromo

Default price subprocess



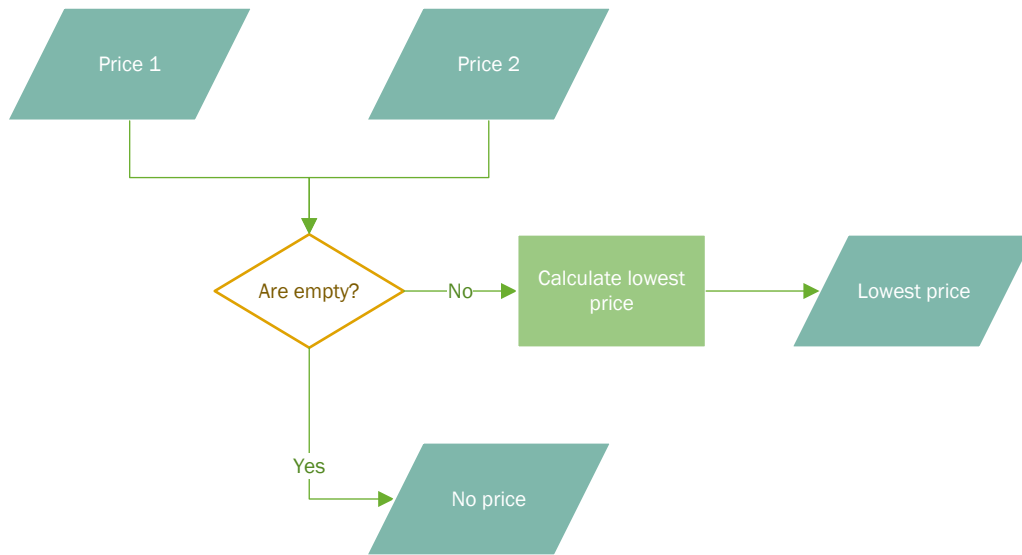
Additional information

(1) Has rights to view/get promotions
Data can be added by use of the API. See
POST/PUT of Clients
Field: HasPromos

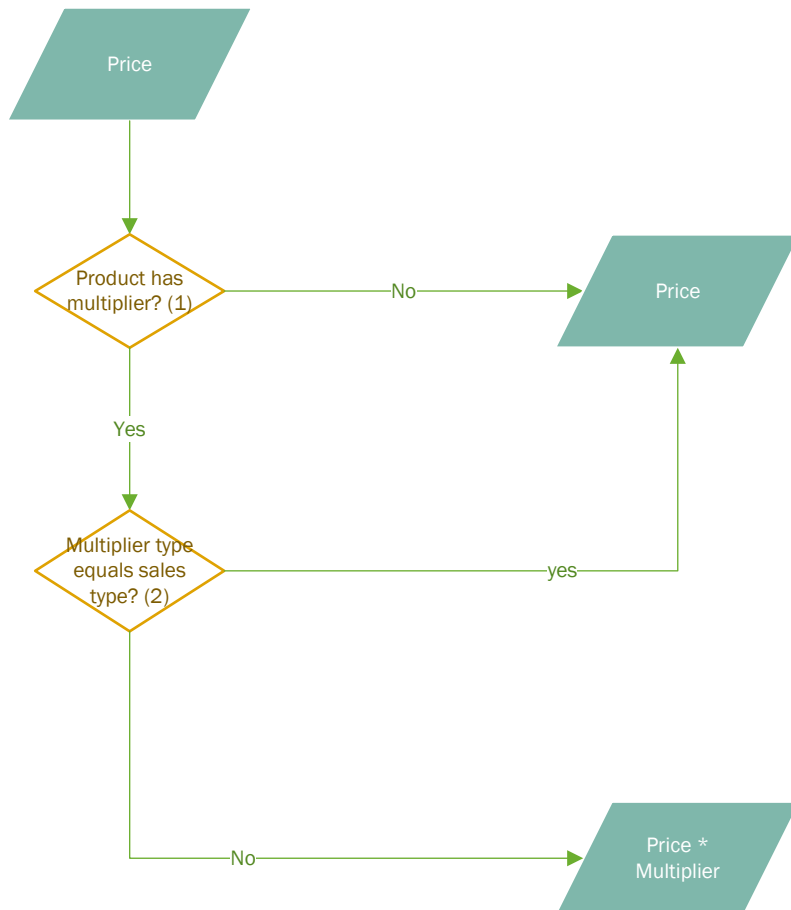
(2) Promotion data
Data can be added by use of the API. See
POST/PUT of Products/LinkProducts
- PromoValidFrom
- PromoValidUntil

(3) Pricing data
Data can be added by use of the API. See
POST/PUT of Products/LinkProducts
- Wholesaler price: SalesPriceList
- Wholesaler promo price:
SalesPriceListPromo

Lowest price subprocess



Actual pricing subprocess



Additional information

(1) Multiplier data

Data can be added by use of the API. See POST of Products

- Multiplier
- GET of Products/CentralProducts/LinkProducts
- MultiplierAmount

(2) Multiplier data

Data can be added by use of the API. See POST of Products

- MultiplierAbbreviation
- GET of Products/CentralProducts/LinkProducts
- MultiplierContentType